

# Upper Extremity

Product Catalog

# Products

## WRIST FIXATION SYSTEM™

- Volar Bearing Plate™
- Volar Fixed Angle Plate™
- Volar Hook Plate™
- Dorsal Hook Plate™
- Radial Column Pin Plate™
- Dorsal Ulnar Pin Plate™
- Volar Buttress Pin™
- Dorsal Buttress Pin™
- Radial Malunion Plate™
- Radial Peg Plate™
- Bridge Plate™
- Volar Shear Plate™
- Small Fragment Clamps™
- Ulnar Sled™
- Ulnar Peg Plate™

## CLAVICLE FIXATION SYSTEM

- Superior Midshaft Clavicle Plate™
- Superior Lateral Clavicle Plate™
- Anterior Clavicle Plate™

## HAND PLATING SYSTEM

- 1.5 Plates
- 2.0 Plates

## ULNAR OSTEOTOMY SYSTEM™

- Ulnar Osteotomy Compression Plate™

## ELBOW FOREARM SYSTEM™

- Olecranon Sled™
- Olecranon Hook Plate™
- Forearm Plate™

## STAPLE SYSTEM™

- Nitinol Staple™

## CANNULATED SCREW SYSTEM™

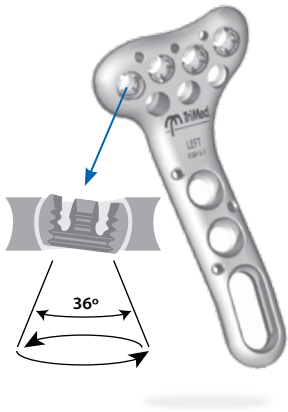
- Small Headless Screw™

## FUSION CUP SYSTEM™

- Upper Fusion Cup™

## TOTAL WRIST FUSION™

- Total Wrist Fusion Plate™



## Volar Bearing Plate™

Variable-angle bearings that lock to provide optimal subchondral support

### Typical uses:

- Extra-articular distal radius fractures
- Intra-articular distal radius fractures

### Sizes:      Lengths:

3 Hole <sup>++</sup>	45mm
3 Hole	48mm
5 Hole <sup>++</sup>	59mm
7 Hole	72mm
9 Hole*	98mm
11 Hole*	130mm



Lefts & Rights | + Narrow | ++ Standard & Wide | \* Special Order



## Volar Fixed Angle Plate™

Quick-Guide option for expediting placement of pegs

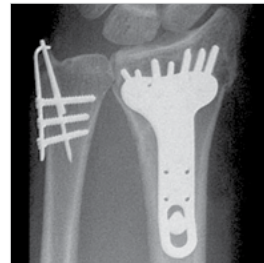
### Typical uses:

- Extra-articular distal radius fractures

### Sizes:      Lengths:

3 Hole	48mm
5 Hole	59mm

Lefts & Rights



## Volar Hook Plate™

Fossa specific™ volar fixation

### Typical uses:

- Volar rim and lunate facet fragments
- Extra-articular fractures

### Sizes:      Lengths:

4 Hole	32mm
6 Hole	50mm



## Dorsal Hook Plate™

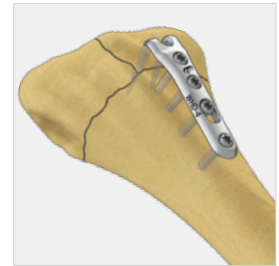
Column specific support from the dorsal side



### Typical uses:

- Dorsal sigmoid notch fragment
- Buttress dorsal ulnar and dorsal radial columns

Sizes:	Lengths:
4 Hole	32mm
6 Hole	50mm



## Radial Column Pin Plate™

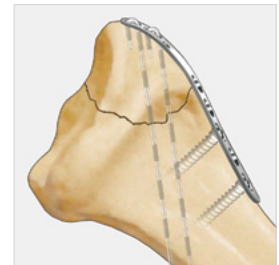
Column support for radial styloid and stabilization of DRUJ



### Typical uses:

- Smaller radial styloid fragments
- Larger radial column fragments

Sizes:	Lengths:
3 Hole	37mm
5 Hole	47mm
7 Hole	57mm



## Dorsal Ulnar Pin Plate™

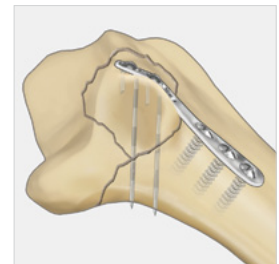
Secure fixation for the dorsal sigmoid notch fragment



### Typical uses:

- Dorsal sigmoid notch fragment
- Ulnar styloid fractures

Sizes:	Lengths:
3 Hole	30mm
5 Hole	40mm
7 Hole	50mm





## Volar Buttress Pin™

Only implant available for complex fractures of the volar rim

### Typical uses:

- Small, distal volar fragments
- Free intra-articular fragments

### Lengths:

- 32mm
- 42mm

*Not including length of snap-on Wireform plate*



## Dorsal Buttress Pin™

Simple, direct subchondral and wall support from the dorsal side

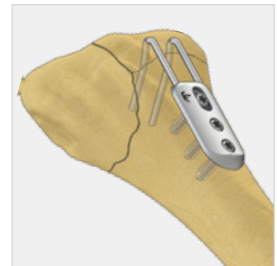
### Typical uses:

- Dorsal wall fragments
- Free intra-articular fragments

### Lengths:

- 27mm
- 32mm

*Not including length of snap-on Wireform plate*



## Radial Malunion Plate™

Easiest, most anatomically accurate option for corrective osteotomies

### Typical uses:

- Malunions of the distal radius
- Acute extra-articular fractures with metaphyseal extension

### Size: Length:

- 9 Hole\* 69mm

*Left & Right | \* Special Order*





## Radial Peg Plate™

Fixed angle plate that limits exposure and expedites reduction of simple fractures

### Typical uses:

- Extra-articular distal radius fractures
- Simple intra-articular distal radius fractures

**Size:** 7 Hole\*    **Length:** 48mm

*Left & Right | \* Special Order*



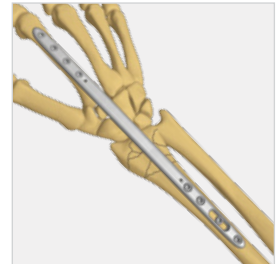
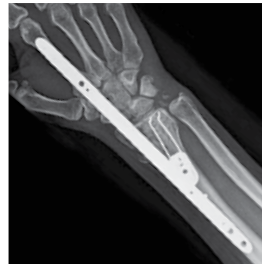
## Bridge Plate™

Internal distraction plate

### Typical uses:

- Highly comminuted articular fractures
- Metaphyseal extension fractures

**Size:** 8 Hole    **Length:** 178mm



## Volar Shear Plate™

Buttress support to the volar rim

### Typical uses:

- Volar Barton fractures

**Size:** 6 Hole    **Length:** 42mm

*Left & Right*





## Small Fragment Clamps™

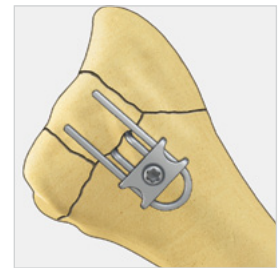
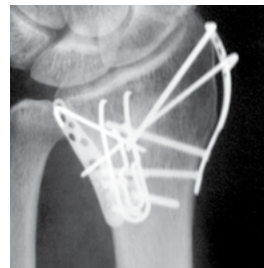
Fixation of dorsal cortical wall and articular fragments

### Typical uses:

- Dorsal wall fragments
- Free intra-articular fragments

### Lengths:

Buttress Pin: 24, 27mm  
 Inner Component: 24mm  
 Outer Component: 28, 32mm



## Ulnar Sled™

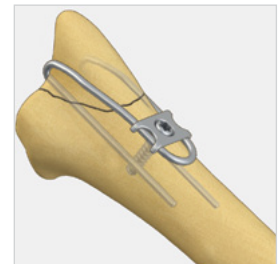
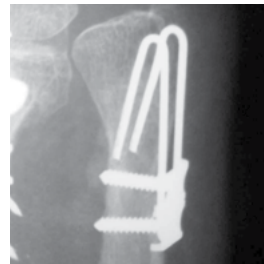
One-piece tension band to stabilize the distal ulna

### Typical uses:

- Ulnar styloid fractures
- Distal ulnar head fractures

### Length:

38mm



## Ulnar Peg Plate™

Fixed angle plate to stabilize the distal ulna

### Typical uses:

- Ulnar head fractures
- Ulnar neck fractures

### Sizes:      Lengths:

5 Hole\*      42mm  
 7 Hole\*      54mm

\* Special Order





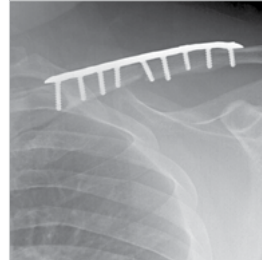
## Superior Midshaft Clavicle Plate™

Bendable pre-contoured plates for midshaft clavicular fractures

**Typical uses:**

- Middle-third clavicle fractures
- Comminuted midshaft clavicle fractures

Sizes:	Lengths:
7 Hole	59mm
8 Hole	69mm
9 Hole	100mm
10 Hole	124mm



*Lefts & Rights*



## Superior Lateral Clavicle Plate™

Secure fixation of distal-end clavicular fractures

**Typical uses:**

- Complex lateral-third clavicle fractures
- Displaced and intra-articular lateral-end fractures

Sizes:	Lengths:
11 Hole	63mm
12 Hole	86mm
15 Hole*	122mm



*Lefts & Rights | \* Special Order*



## Anterior Clavicle Plate™

Anterior options to stabilize lateral and midshaft clavicular fractures

**Typical uses:**

- Middle-third clavicle fractures
- Simple lateral clavicle fractures
- Complex oblique clavicle fractures

Sizes:	Lengths:	Segment:
8 Hole	84mm	Lateral
8 Hole	92mm	Midshaft
11 Hole	109mm	Midshaft







## Straight Plate™

Versatile, locking plate for middle and proximal phalanx shaft fractures

### Typical uses:

- Transverse shaft fractures
- Oblique shaft fractures

### Sizes:      Lengths:

4 Hole	19mm
6 Hole	26mm
16 Hole	71mm



## T-Plate™

Pre-contoured implant for malrotated and unstable fractures

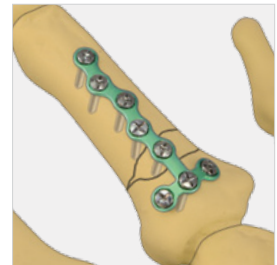
### Typical uses:

- Phalangeal neck and base fractures

### Sizes:      Lengths:

7 Hole <sup>+</sup>	27mm
8 Hole	27mm
11 Hole	37mm
12 Hole <sup>++</sup>	37mm

<sup>+</sup>Narrow | <sup>++</sup>Wide



## L-Plate™

### Typical uses:

- Unicondylar fractures of the proximal phalanx
- Extra-articular neck and base fractures

### Size:      Length:

5 Hole	18mm
--------	------

Left & Right





## H-Plate™

Offset, neutralization plate for complex midshaft fractures

### Typical uses:

- Spiral fractures
- Comminuted fractures

### Sizes:      Lengths:

8 Hole\*      19mm

12 Hole      34mm

\* Left & Right



## HAND PLATING SYSTEM - 2.0 PLATES



## Straight Plate™

Edge-free contoured plate for proximal phalanx and metacarpal shaft fractures

### Typical uses:

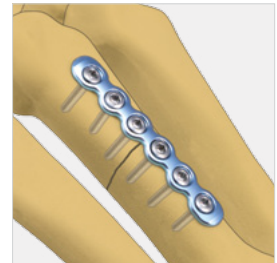
- Transverse shaft fractures
- Oblique shaft fractures

### Sizes:      Lengths:

4 Hole      26mm

6 Hole      35mm

16 Hole      90mm



## T-Plate™

Anti-rotation, precision alignment option for metacarpal fractures

### Typical uses:

- Metacarpal neck and base fractures
- Rolando fractures

### Sizes:      Lengths:

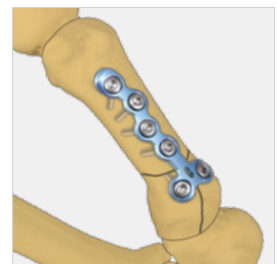
6 Hole<sup>+</sup>      31mm

7 Hole<sup>+</sup>      37mm

7 Hole      31mm

8 Hole      37mm

<sup>+</sup> Narrow



## L-Plate™

Rigid fixation for metacarpal extra-articular and intra-articular fractures

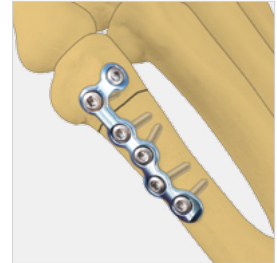


### Typical uses:

- Extra-articular neck and base fractures
- Bennett fractures

**Size:** 6 Hole      **Length:** 32mm

*Left & Right*



## H-Plate™

Implant option for reconstruction of complex metacarpal shaft fractures

### Typical uses:

- Spiral fractures
- Comminuted metacarpal fractures

**Sizes:** 6 Hole      **Lengths:** 21mm  
8 Hole      29mm



## ULNAR OSTEOTOMY SYSTEM™



## Ulnar Osteotomy Compression Plate™

Fast and precise ulnar shortening system

### Typical uses:

- Positive ulnar variance
- Ulnar impaction syndrome

**Length:** 90mm



Courtesy of Jeffrey Yao, MD



## Olecranon Sled™

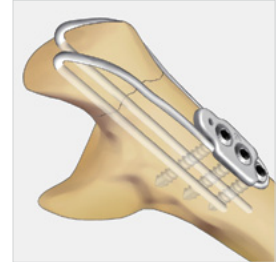
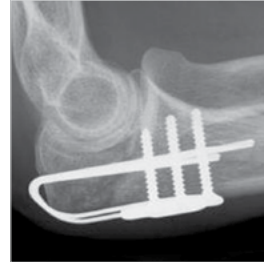
Easy to use, smooth-profile tension-band wire

### Typical uses:

- Simple, transverse olecranon fractures (acute or non-union)
- Olecranon osteotomies for supracondylar fractures or total elbow arthroplasties

### Lengths:

- 47mm
- 58mm



## Olecranon Hook Plate™

Unparalleled compression while preserving triceps insertion

### Typical uses:

- Comminuted olecranon fractures

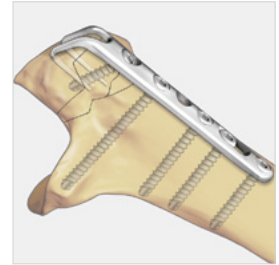
### Sizes:

- 4 Hole
- 6 Hole+
- 8 Hole+

### Lengths:

- 60mm
- 74mm
- 85mm

+ Left & Right



## Forearm Plate™

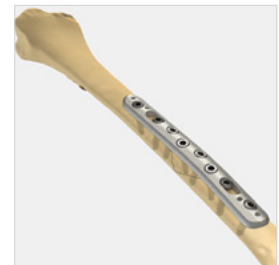
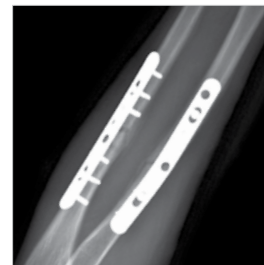
Pre-contoured plating system specifically for forearms

### Typical uses:

- Radial and ulnar fractures
- Both bones fractures

Sizes	Straight	Curved	Length
5 Hole	X		57mm
6 Hole	X	X	70mm
8 Hole	X	X	95mm
10 Hole	X	X	124mm
15 Hole	X	X*	178mm

\* Special Order



# STAPLE SYSTEM™

Symmetrical



Asymmetrical



## Nitinol Staple™

Continual, dynamic compression without heating or cooling

### Typical uses:

- Intracarpal and interphalangeal fusions
- Carpal, metacarpal and phalangeal osteotomies or fracture fixation



Width	Leg Lengths	
	Symmetrical	Asymmetrical
8mm	8/8	
10mm	10/10	10/13 13/15
12mm	10/10	10/13 13/15
15mm	12/12	13/16

# CANNULATED SCREW SYSTEM™



## Small Headless Screw™

Broad array of self-drilling headless cannulated screws all in one tray

### Typical Uses

	1.7	2.3	3.0	3.5
Scaphoid Fractures		X	X	
Radial Column & Styloid Fractures	X	X	X	X
Radial Head Fractures	X	X	X	
Phalangeal Fractures	X	X		
Metacarpal Fractures	X	X		
DIP Fusions	X	X		
PIP Fusions		X		
Partial Wrist Fusions		X	X	

### Sizes:

- |     |  |     |  |
|-----|--|-----|--|
| 1.7 | 6-8mm (2mm increments)<br>8-14mm (1mm increments)                                | 3.0 | 10-20mm (2mm increments)<br>20-26mm (1mm increments)<br>26-36mm (2mm increments) |
| 2.3 | 10-20mm (2mm increments)<br>20-26mm (1mm increments)<br>26-28mm (2mm increments) | 3.5 | 20-32mm (2mm increments)<br>35-45mm (5mm increments)                             |

## FUSION CUP SYSTEM™



### Upper Fusion Cup™

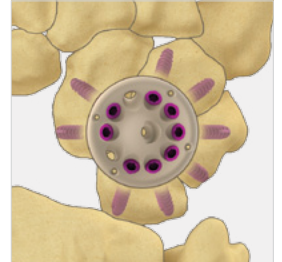
Radiolucent PEEK OPTIMA® plate with variable-angle locking technology

#### Typical uses:

- Four-corner arthrodesis
- STT arthrodesis

#### Sizes:                      Diameters:

7 Hole	14mm
10 Hole	18mm



## TOTAL WRIST FUSION™



### Total Wrist Fusion Plate™

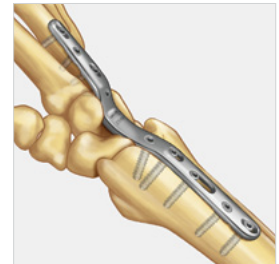
A proven technology with augmented instrumentation

#### Typical uses:

- Wrist arthritis
- Reconstruction procedures
- Salvage procedures

#### Sizes:                      Lengths:

Standard Bend	117mm
Short Bend	117mm
Straight	112mm







TriMed, Inc. | 27533 Avenue Hopkins | Santa Clarita, California 91355  
T. 800-633-7221 T. 661-255-7406 F. 661-254-8485  
[www.trimedortho.com](http://www.trimedortho.com)



© 2016 TriMed, Inc. All rights reserved.

Patent Coverage: TriMed, Inc. products are covered by patents issued in the U.S. and in foreign jurisdictions. The presently issued U.S. patents are:  
5,709,662; 5,931,839; 5,941,878; 6,077,266; 6,113,603; 7,037,308; 7,195,633; 7,540,874; 8,177,822; 8,821,508; 8,906,070; 9,089,376; 9,283,010

The technique presented is one suggested surgical technique. The decision to use a specific implant and the surgical technique must be based on sound medical judgment by the surgeon that takes into consideration factors such as the circumstances and configuration of the injury.



TME 881- 6 11/16